

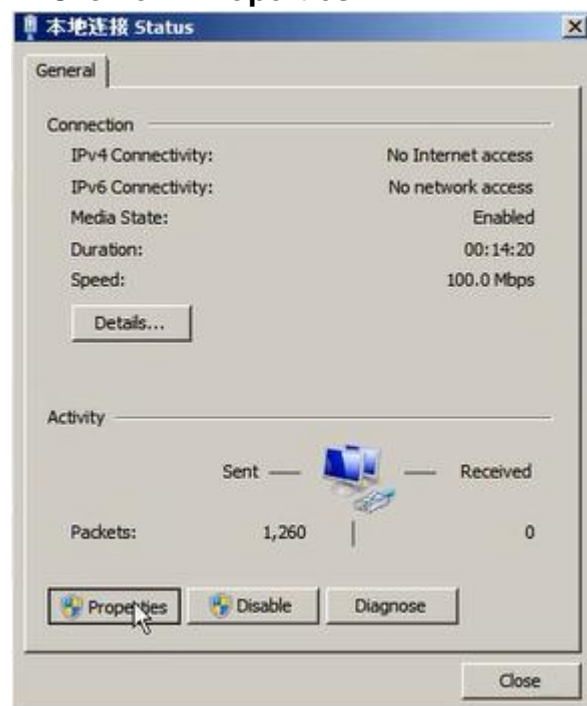
SD C4 PLUS DOIP setting step by step

SD C4 PLUS DOIP configuration procedure

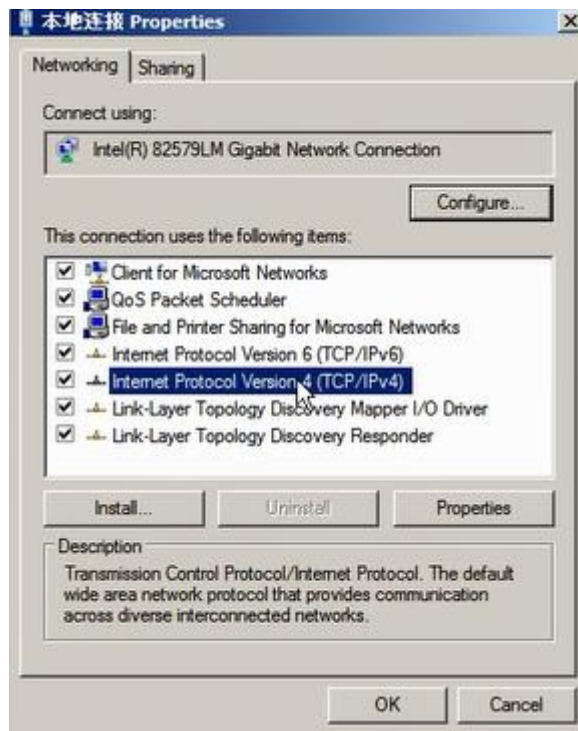
1. Open the local network connection.



2. Click on "Properties".

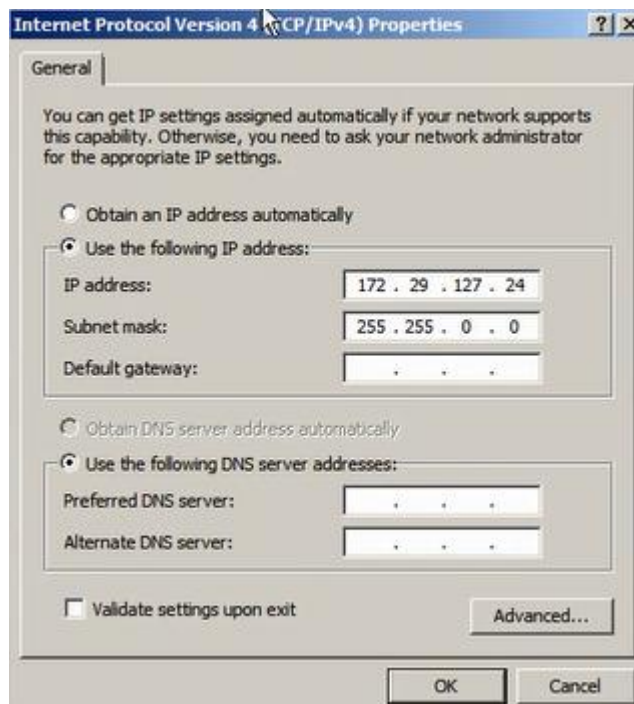


3. Click on "Internet Protocol Version 4 (TCP/IPv4)".

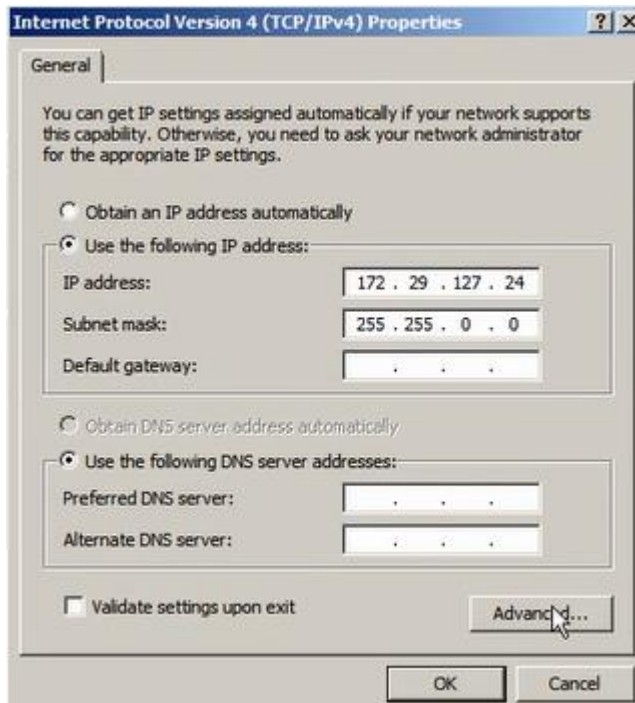


4. Set the IP address.

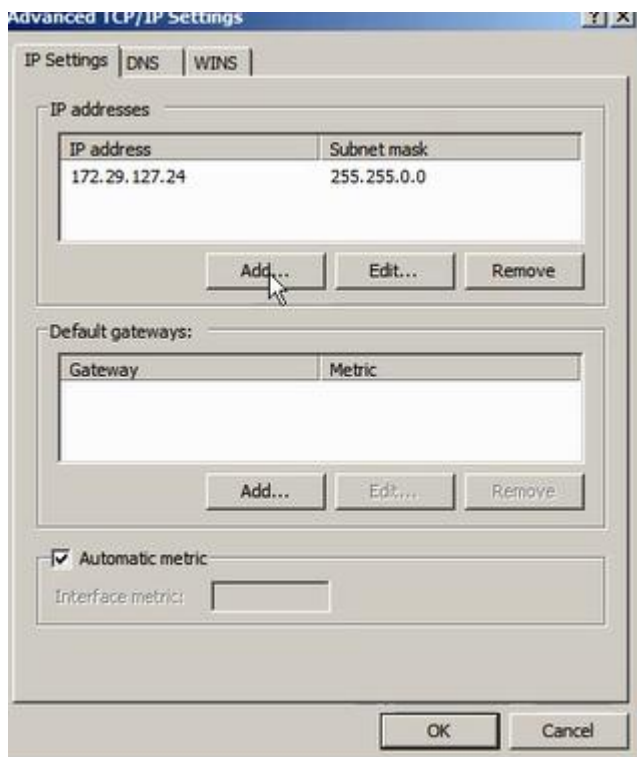
The current IP address is:172.29.127.24 and Subnet mask is 255.255.0.0.



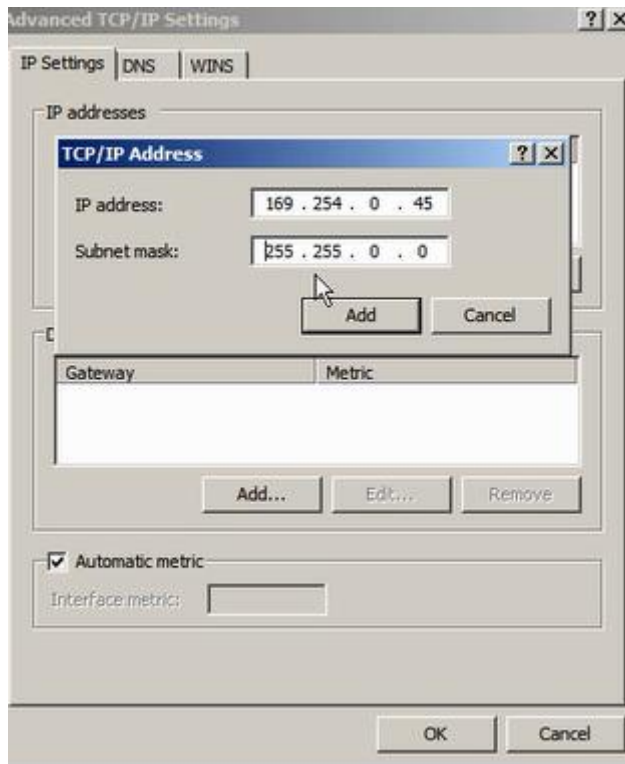
5. Click on "Advanced".



6. Click on "Add" to set the IP address for DOIP.



7. Set the new IP address as 169.254.0.** (any number between 0-255 is okay)



8. Click on "Add", then "OK" to finish setting the IP address for DOIP.